

S T U D E N T C A L E N D A R

DAYTON
ELEMENTARY SCHOOL

2018

School Hours:
9:30 a.m.-4:00 p.m.



2019

[www.ahschools.us/
dayton](http://www.ahschools.us/dayton)

Absence Line: 763-506-2206

Health Office: 763-506-2204
Bus Company: 763-421-5785

Main Office: 763-506-2200

P A R E N T H A N D B O O K

DAYTON ELEMENTARY SCHOOL

12000 S. DIAMOND LAKE RD. • DAYTON, MN 55327

Dear Families:

The Dayton School Staff welcomes you and your family to the 2018-2019 school year. We look forward to working with you and your child this year.

This handbook and calendar is intended to provide you with helpful information about policies, procedures, and activities at Dayton Elementary. If you have any questions now or during the school year, please call us or drop by.

Sincerely,
Jessica Wippler
Principal
763-506-2200
jessica.wippler@ahschools.us



HELPFUL PHONE NUMBERS

Dayton School	763-506-2200
Dayton Fax Number	763-506-2203
Health Service	763-506-2204
Dayton Absence Line	763-506-2206 (24 Hours a Day)
Dayton Child Nutrition	763-506-2211
Community Education	763-506-2212
Adventures Plus	763-506-2213
Volunteer Services	763-506-2230
Bus Company	763-421-5785

ABSENCE LINE: 763-506-2206

MAIN OFFICE: 763-506-2200



SEPTEMBER 2018

D A Y T O N E L E M E N T A R Y S C H O O L

		SUNDAY	MONDAY	TUESDAY	WEDNESDAY	THURSDAY	FRIDAY	SATURDAY		
		AUGUST 2018 S M T W T F S 1 2 3 4 5 6 7 8 9 10 11 12 13 14 15 16 17 18 19 20 21 22 23 24 25 26 27 28 29 30 31		OCTOBER 2018 S M T W T F S 1 2 3 4 5 6 7 8 9 10 11 12 13 14 15 16 17 18 19 20 21 22 23 24 25 26 27 28 29 30 31						1
	2	<i>Labor Day</i>	3	4	5	6	7	8		
				First Day of School 1	2	3	Summer Reading Logs Due 4			
	9	10	11	12	13	14	15			
						DAYTON FUNDRAISER				
						Rally Day				
		5	1	2	3	4				
	16	17	18	19	20	21	22			
			PTO Meeting 6:00 p.m.							
		DAYTON FUNDRAISER								
		5	1	2	3	4				
	23	24	25	26	27	28	29			
			Fall Picnic 4:30-7:00 p.m.			Summer Reading Celebration During School Day				
		DAYTON FUNDRAISER								
		5	1	2	3	4				
30										

DAYTON ELEMENTARY SCHOOL

12000 S. DIAMOND LAKE RD. • DAYTON, MN 55327

AH CONNECT

AH Connect is a secure on-line service that provides parents easy access to school information. A few features are; Bus route information, lunch account balances, emergency contact information, state and district standardized test results, and the ability to make a payment to your child's lunch account on-line.



Please call
763-506-HELP
(4357)

for assistance with
your username
and password.

ATTENDANCE GUIDELINES

School begins at 9:30 AM

The State Law requires that all school age children must attend school regularly. Students who are absent or late to school miss out on the class discussions and teacher presentations, and therefore, often end up with gaps in their learning that show up later when related content is presented.

School is dismissed at 4:00 PM

Absence Phone Line: **763-506-2206.**

Absences:

- Average absences due to illness per school year are seven days or less.
- If extended illness is more than 3 days in a row, please provide a Dr. note.
- Medical and dental appointments; if possible please schedule on non-school days.
- Limit personal/vacation absences to non-school days or breaks.

Late/Tardy:

- Students need to be in class by 9:30 a.m.
- Do not drop off students at school before 9:15 a.m. as they will not have access to the building.
- Breakfast is served starting at 9:15 a.m.
- Parents of students with above average absences will be notified by the school.
- Excessive absences may lead to a referral to Hennepin County Social Services for possible support/action.

BEING ON TIME IS A LIFE SKILL FOR YOUR CHILD'S SUCCESSFUL FUTURE.



ABSENCE LINE: 763-506-2206

MAIN OFFICE: 763-506-2200



OCTOBER 2018

DAYTON ELEMENTARY SCHOOL

SUNDAY	MONDAY	TUESDAY	WEDNESDAY	THURSDAY	FRIDAY	SATURDAY																																																																																																		
	1	2	3	4	5	6																																																																																																		
	5	1	2	3	4																																																																																																			
7	<i>Columbus Day</i> 8 Conferences Bookfair NO SCHOOL Staff Development	9 Conferences Bookfair PTO Meeting 6:00 p.m.	10 Fire Prevention Day	11 Conferences Bookfair	12	13																																																																																																		
		5	1	2	3																																																																																																			
14	15	16	17	18	19	20																																																																																																		
		5	NO SCHOOL Staff Development	NO SCHOOL MEA	NO SCHOOL MEA																																																																																																			
21	22	23	24	25	26	27																																																																																																		
	1	2	3	4 Learning Fair 5:30-7:00 p.m.	5																																																																																																			
28	29	30	<i>Halloween</i> 31		SEPTEMBER 2018 NOVEMBER 2018																																																																																																			
	1	2	3		<table border="1"> <thead> <tr> <th>S</th><th>M</th><th>T</th><th>W</th><th>T</th><th>F</th><th>S</th> <th>S</th><th>M</th><th>T</th><th>W</th><th>T</th><th>F</th><th>S</th> </tr> </thead> <tbody> <tr> <td></td><td></td><td></td><td></td><td></td><td></td><td>1</td> <td></td><td></td><td></td><td></td><td>1</td><td>2</td><td>3</td> </tr> <tr> <td>2</td><td>3</td><td>4</td><td>5</td><td>6</td><td>7</td><td>8</td> <td>4</td><td>5</td><td>6</td><td>7</td><td>8</td><td>9</td><td>10</td> </tr> <tr> <td>9</td><td>10</td><td>11</td><td>12</td><td>13</td><td>14</td><td>15</td> <td>11</td><td>12</td><td>13</td><td>14</td><td>15</td><td>16</td><td>17</td> </tr> <tr> <td>16</td><td>17</td><td>18</td><td>19</td><td>20</td><td>21</td><td>22</td> <td>18</td><td>19</td><td>20</td><td>21</td><td>22</td><td>23</td><td>24</td> </tr> <tr> <td>23</td><td>24</td><td>25</td><td>26</td><td>27</td><td>28</td><td>29</td> <td>25</td><td>26</td><td>27</td><td>28</td><td>29</td><td>30</td><td>31</td> </tr> <tr> <td>30</td><td>31</td><td></td><td></td><td></td><td></td><td></td> <td></td><td></td><td></td><td></td><td></td><td></td><td></td> </tr> </tbody> </table>		S	M	T	W	T	F	S	S	M	T	W	T	F	S							1					1	2	3	2	3	4	5	6	7	8	4	5	6	7	8	9	10	9	10	11	12	13	14	15	11	12	13	14	15	16	17	16	17	18	19	20	21	22	18	19	20	21	22	23	24	23	24	25	26	27	28	29	25	26	27	28	29	30	31	30	31												
S	M	T	W	T	F	S	S	M	T	W	T	F	S																																																																																											
						1					1	2	3																																																																																											
2	3	4	5	6	7	8	4	5	6	7	8	9	10																																																																																											
9	10	11	12	13	14	15	11	12	13	14	15	16	17																																																																																											
16	17	18	19	20	21	22	18	19	20	21	22	23	24																																																																																											
23	24	25	26	27	28	29	25	26	27	28	29	30	31																																																																																											
30	31																																																																																																							
		Dayton Fundraiser Pick-up	Fall Party																																																																																																					

DAYTON ELEMENTARY SCHOOL

12000 S. DIAMOND LAKE RD. • DAYTON, MN 55327

BEHAVIOR PLAN

When adults (staff, parents, volunteers) have consistent and high expectations there is a significant impact on student behavior.



Our school-wide expectations are explicitly taught to students, and staff, in all areas of the school and revisited throughout the year. Furthermore, our expectations are posted throughout the school and are visible through our actions. These expectations and routines are modeled, practiced, and positively reinforced throughout the classrooms and common spaces regularly. Special attention is given to recognize difficult "seasons" (before and after breaks and other big changes in routine) because revisiting routines and expectations supports the success of students.



If your child would like to share a healthy snack with classmates, please be sure to arrange this in advance with the classroom teacher. Grade levels have different plans for birthday recognition, and some classes do NOT accept treats. In accordance with the district wellness policy, sweets (including cakes, cookies, ice cream, etc.) will not be accepted for classroom distribution.

Any healthy treat for class distribution sent to school must be commercially prepared and individually wrapped. This will permit treats to be distributed easily in the lunchroom OR to be sent home in backpacks. Low fat snack bars, cracker or pretzel bags, new pencils, or even a donated book for the classroom library are suggested ideas. Our Kitchen Supervisor, Jill (763-506-2211), is available to assist or order healthy or approved snacks for you!

CHILD NUTRITION PROGRAM

Students have the option of purchasing a hot lunch or bringing a lunch from home. Milk, juice and water may be purchased separately. Students will be provided with a P.I.N. number, which will access their personal meal account. When making a deposit in your child's P.I.N. food account, please write the student's name, homeroom and P.I.N. number on the lower left hand corner of your check. If paying in cash, please enclose money in an envelope with the same information. Deposits can now be made on-line at AH Connect. Student PIN numbers will be available during open house night. If you have questions regarding your child's account, contact our CNP Supervisor, at 763-506-2211 for help. Parents will receive a menu each month featuring the daily food choices.

The Dayton cafeteria will also be offering breakfast to students. Our Child Nutrition Program serves breakfast from 9:15-9:30 a.m. Free and reduced meals (breakfast and/or lunch) are available for those who qualify. Questions regarding eligibility should be directed to our CNP Supervisor or to the District Child Nutrition Office at 763-506-1242.

- No charge for Kindergarten Student Breakfast
- Elementary Student Breakfast – **\$1.45**
- Adult/Visitor Breakfast – **\$2.40**
- Elementary Student Lunch – **\$2.45**
- Adult/Visitor Lunch – **\$3.85**
- Milk only - **\$.50**


ABSENCE LINE: 763-506-2206

MAIN OFFICE: 763-506-2200



NOVEMBER 2018

D A Y T O N E L E M E N T A R Y S C H O O L

SUNDAY							MONDAY							TUESDAY							WEDNESDAY							THURSDAY							FRIDAY							SATURDAY																				
OCTOBER 2018							DECEMBER 2018																					1							2							3																				
S	M	T	W	T	F	S	S	M	T	W	T	F	S																																																	
	1	2	3	4	5	6							1																																																	
7	8	9	10	11	12	13	2	3	4	5	6	7	8																																																	
14	15	16	17	18	19	20	9	10	11	12	13	14	15																																																	
21	22	23	24	25	26	27	16	17	18	19	20	21	22																																																	
28	29	30	31				23	24	25	26	27	28	29																																																	
							30	31																																																						
4							5							6 Election Day							7							8							9							10 Veterans Day																				
							1							2							3							4							5																											
<i>Veterans Day</i> 11							12							13 PTO Meeting 6:00 p.m.							14							15							16							17																				
							1							2							3							4							5																											
18							19							20							21 NO SCHOOL Staff Development							<i>Thanksgiving</i> 22  NO SCHOOL							23 NO SCHOOL							24																				
							1							2														THANKSGIVING BREAK																																		
25							26							27							28							29 <i>End of Trimester 1</i>							30 Santa Shop and Dessert Night 5:30-8:00 p.m. NO SCHOOL Staff Planning																											
							3							4							5							1																																		

DAYTON ELEMENTARY SCHOOL

12000 S. DIAMOND LAKE RD. • DAYTON, MN 55327

COMMUNICATION BETWEEN PARENTS AND THE DAYTON SCHOOL STAFF

We, the Dayton Elementary staff, believe that family involvement impacts a student's success. Your child's teacher is usually the best person to respond to questions or concerns that you might have concerning academic progress, social relationships, etc. Please contact the teacher first when a question arises. The office staff will help you with questions and concerns that are more general in nature. The principal may be called regarding more serious matters. The school number is **763-506-2200**.

Phone Calls During the Day: While each classroom has a phone, it is important not to interrupt teaching with phone calls. Teachers will have the messaging system activated during the school day. Any important call for your child or the teacher during the school day should be handled through the office (763-506-2200).

Flyers: School and community handouts will be sent home regularly on Wednesdays with students. If a flyer comes home on purple paper, it will need a signature or other information from you for return to school

E-News: Check the Dayton web site principal's corner and click on "e-newsletter". The newsletter is sent via email monthly on Wednesdays. The newsletter contains important information about upcoming school events.

In Touch Notifications: Periodically you may receive school information via a pre-recorded message from Mrs. Wippler. This system will distribute Mrs. Wippler's message to every Dayton family. Listen for these a few times a year!

Progress Reports: Parents will receive three written progress reports. Parent/Teacher Conferences are held twice a year and are essential for maintaining home and school communication. If you wish to confer with a teacher in addition to conferences, please call to leave a message. Teachers will return your calls when they are not with students. Calling to arrange an appointment is appreciated since staff members have meetings to attend. Office staff will help with questions and concerns that are more general.

Parent/Teacher Conferences 2018-19

Fall Schedule: October 8, 9 and 11, 2018 **Spring Schedule:** February 19, 20 and 21, 2019

VISITING SCHOOL

Parents are welcome to Dayton to volunteer or to have lunch with their child. Volunteering must be planned with our Volunteer Coordinator at 763-506-2230.

All Visitors/Volunteers must sign-in with a valid drivers license or picture ID and receive a Visitor's Badge to wear in the school. This is to comply with state law and the safety of all Dayton students.

Lunch Guest Policy: Parent written or verbal permission must be received by the school office, if anyone other than a parent/guardian is having lunch with a student.

Recess: Visitors are not able to join students at recess.

COMMUNITY SCHOOL

After-school educational and recreational opportunities exist for Dayton students. Watch for flyers to come home with more information. We encourage all family members to participate. Activities require advanced registration through the Community School Office. Dayton Community School phone number is 763-506-2230.

DRESS CODE

Elementary schools follow the dress code policy that is spelled out in the district discipline policy in sections II.B and III.B.12. In brief, dress and grooming must meet standards of safety, health and standards of decency. Clothing, attire or personal grooming that disrupts the educational process or that violates common standards of decency as they apply to a school setting are not permitted. Upon approval of school administration, head coverings and hats may be worn for special events, medical, or religious reasons. For physical education, elementary students must wear tennis shoes appropriate for running that stay on the feet.

Elementary students go outside for recess, so in the winter months it is important to dress your child in warm winter wear, such as winter coats, hats, scarves, gloves or mittens and boots. During the warmer months, students should not wear flip-flops for recess.

ABSENCE LINE: 763-506-2206

MAIN OFFICE: 763-506-2200

DROPPING OFF AND PICKING UP STUDENTS AT DAYTON ELEMENTARY

All Students enter the building at 9:15 a.m. when the first bell rings. Students are also allowed off of the buses at this time. Students should go directly to their classroom or to the cafeteria for breakfast. Breakfast is served in the cafeteria from 9:15 – 9:30 a.m.

Arriving by Car or Walkers/Bikers: Drop-off in the mornings: Students may be dropped curbside by car in the drop-off lane that extends **along the main parking lot** for the school. There will be staff on duty to assist students during the drop-off process. Please be certain that your child **doesn't arrive before 9:15 a.m.** All walkers and bikers should enter the building through the front entrance. Student bike racks are located near the playground. **Dayton Elementary encourages students riding their bikes to wear a bike helmet.**

Late Arrivals:

Students arriving after 9:30 a.m. should be signed in at the school office by the parent. The student needs to obtain a pass from Health Service before going to the classroom.

Student Release from School:

District guidelines require schools to verify ID from anyone picking up a student from school. Only parents/guardians are permitted to leave with students without verbal or written parent permission. Dayton verifies identification for parents and adults taking students. If you have a relative or friend pick up your child, it is important that you send a note, email, or call the school with your plans. All students should be signed out at the front office.

Riding the Bus at the end of the day:

Students are escorted by their teachers between 4:00-4:10 p.m. from various school exits to buses.

DROP OFF/PICK UP LANE PROCEDURES:

If you are using the drop off/pick up lane, please assist with the following:

- 1) Move forward as far as possible in the drop-off/pick-up lane
- 2) Put your car in "park" for safety
- 3) Have children exit/enter the car at curbside only (passenger side)
- 4) Move out as soon as you've unloaded /loaded children to make room for waiting cars
- 5) Do not leave your car unattended in the drop-off lane to enter the building or talk to staff. The drop-off lane is only intended for forward movement and quick transitions of students.

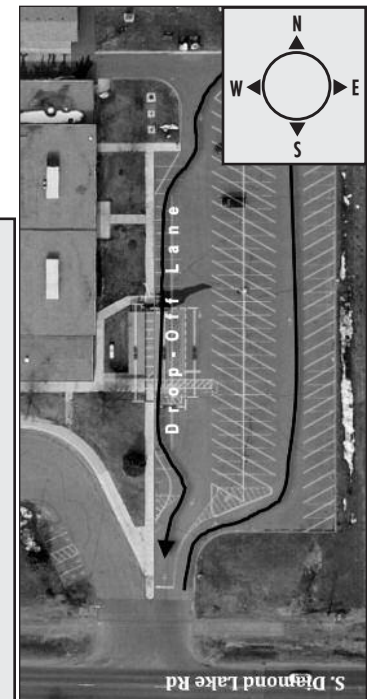
At the end of the day, students will be released from their classroom at 4:00 p.m. and will wait near the pick-up lane to watch for their vehicle to move forward. Staff will be in proximity to assist students and keep them in a safe location while waiting and watching for vehicles. **Supervision ends at 4:10 p.m.**, so please be prompt when picking up your student from the pick up lane.

The Central Park City parking lot will remain open for parents who choose to avoid congestion in the main parking lot, **however it will not be supervised.**

DISMISSAL FROM SCHOOL

All Students should have a "Daily Dismissal Plan" form on file with the classroom teacher. This is the plan that will be followed on a daily basis unless we are notified otherwise.

When dismissal plans change, i.e., you are picking up your child at the end of the day, please send a note in the morning notifying the teacher or call the office. **Without a written note from a child's parent or guardian, no alternate arrangements for children can be made. The "Daily Dismissal Plan" will be followed.**



ABSENCE LINE: 763-506-2206

MAIN OFFICE: 763-506-2200



JANUARY 2019

D A Y T O N E L E M E N T A R Y S C H O O L

SUNDAY	MONDAY	TUESDAY	WEDNESDAY	THURSDAY	FRIDAY	SATURDAY																																																																																																																	
		1 NO SCHOOL WINTER BREAK	2	3	4	5																																																																																																																	
			SCOOTER CITY																																																																																																																				
			1	2	3																																																																																																																		
6	7	8 PTO Meeting 6:00 p.m.	9	10	11	12																																																																																																																	
	SCOOTER CITY																																																																																																																						
	4	5	1	2	3																																																																																																																		
13	14	15	16	17	18	19																																																																																																																	
	SCOOTER CITY																																																																																																																						
	4	5	1	2	3																																																																																																																		
20	<i>Martin Luther King Day</i> 21 NO SCHOOL	22	23	24	25	26																																																																																																																	
	APEX FUNDRAISER																																																																																																																						
		4	5	1	2																																																																																																																		
27	28	29	30	31 APEX Fun Run	<table border="1"> <thead> <tr> <th colspan="7">DECEMBER 2018</th> <th colspan="7">FEBRUARY 2019</th> </tr> <tr> <th>S</th><th>M</th><th>T</th><th>W</th><th>T</th><th>F</th><th>S</th> <th>S</th><th>M</th><th>T</th><th>W</th><th>T</th><th>F</th><th>S</th> </tr> </thead> <tbody> <tr> <td></td><td></td><td></td><td></td><td></td><td></td><td>1</td> <td></td><td></td><td></td><td></td><td></td><td></td><td>1</td><td>2</td> </tr> <tr> <td>2</td><td>3</td><td>4</td><td>5</td><td>6</td><td>7</td><td>8</td> <td>3</td><td>4</td><td>5</td><td>6</td><td>7</td><td>8</td><td>9</td> </tr> <tr> <td>9</td><td>10</td><td>11</td><td>12</td><td>13</td><td>14</td><td>15</td> <td>10</td><td>11</td><td>12</td><td>13</td><td>14</td><td>15</td><td>16</td> </tr> <tr> <td>16</td><td>17</td><td>18</td><td>19</td><td>20</td><td>21</td><td>22</td> <td>17</td><td>18</td><td>19</td><td>20</td><td>21</td><td>22</td><td>23</td> </tr> <tr> <td>23</td><td>24</td><td>25</td><td>26</td><td>27</td><td>28</td><td>29</td> <td>24</td><td>25</td><td>26</td><td>27</td><td>28</td><td></td><td></td> </tr> <tr> <td>30</td><td>31</td><td></td><td></td><td></td><td></td><td></td> <td></td><td></td><td></td><td></td><td></td><td></td><td></td> </tr> </tbody> </table>		DECEMBER 2018							FEBRUARY 2019							S	M	T	W	T	F	S	S	M	T	W	T	F	S							1							1	2	2	3	4	5	6	7	8	3	4	5	6	7	8	9	9	10	11	12	13	14	15	10	11	12	13	14	15	16	16	17	18	19	20	21	22	17	18	19	20	21	22	23	23	24	25	26	27	28	29	24	25	26	27	28			30	31												
DECEMBER 2018							FEBRUARY 2019																																																																																																																
S	M	T	W	T	F	S	S	M	T	W	T	F	S																																																																																																										
						1							1	2																																																																																																									
2	3	4	5	6	7	8	3	4	5	6	7	8	9																																																																																																										
9	10	11	12	13	14	15	10	11	12	13	14	15	16																																																																																																										
16	17	18	19	20	21	22	17	18	19	20	21	22	23																																																																																																										
23	24	25	26	27	28	29	24	25	26	27	28																																																																																																												
30	31																																																																																																																						
	APEX FUNDRAISER																																																																																																																						
	3	4	5	1																																																																																																																			

DAYTON ELEMENTARY SCHOOL

12000 S. DIAMOND LAKE RD. • DAYTON, MN 55327

EMERGENCY PLANS

(Fire, Tornado, Crisis Situations)

In order to ensure the safety of students, we regularly hold fire drills. Fire drill procedures and exit plans are available in every classroom. Practice of these safety procedures is mandated by the State Legislature.

A Tornado drill is held in the spring.

Crisis plans have been developed for Dayton Elementary School. The safety of our students is of the utmost priority. The plans include both lock-down and evacuation procedures that will be practiced by students in a gentle and reassuring manner. We want our students to know what to do when we call for a lock-down or an evacuation, but we do not want them to panic or to be concerned about their safety on a day-to-day basis. Our crisis plans have been developed with the help and guidance of national leaders in school safety issues. Every school in the Anoka-Hennepin School District has developed a crisis plan unique to that school and its population.

All students are expected to follow the school rules and safety procedures with great care during the process of a fire, tornado, or lockdown drill.

NEW BUS APP

Track your student's bus in real-time through the new FirstView bus app.

More details at ahschools.us/BusApp.



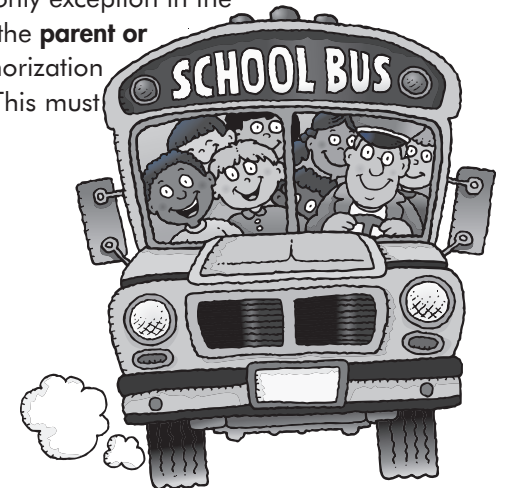
FIRST STUDENT BUS COMPANY-CHAMPLIN

Please call this number beyond school office hours and to report bus related concerns.

763-421-5785

Students Riding Home on Buses Other Than their Own

The school district transportation policy is to **not allow** students to go home on anything but their regularly assigned bus, 5 days a week. The only exception in the policy is for **family emergencies** or in situations when the **parent or guardian is out of town** and you have a written authorization from them to drop their child at a different location. This must be approved by the principal.



ABSENCE LINE: 763-506-2206

MAIN OFFICE: 763-506-2200



FEBRUARY 2019

D A Y T O N E L E M E N T A R Y S C H O O L

SUNDAY	MONDAY	TUESDAY	WEDNESDAY	THURSDAY	FRIDAY	SATURDAY																																																																																																																
					1	2																																																																																																																
3	4	5	6	7	8	9																																																																																																																
10	11	12	13	14	15	16																																																																																																																
		PTO Meeting 6:00 p.m.		Valentine Party																																																																																																																		
17	18	19	20	21	22	23																																																																																																																
	President's Day NO SCHOOL	Conferences Book Fair NO SCHOOL Staff Development	Conferences	Conferences	ROLLERSKATING																																																																																																																	
			Book Fair	Book Fair																																																																																																																		
24	25	26	27	28	<table border="1"> <thead> <tr> <th colspan="7">JANUARY 2019</th> <th colspan="7">MARCH 2019</th> </tr> <tr> <th>S</th><th>M</th><th>T</th><th>W</th><th>T</th><th>F</th><th>S</th> <th>S</th><th>M</th><th>T</th><th>W</th><th>T</th><th>F</th><th>S</th> </tr> </thead> <tbody> <tr> <td></td><td></td><td>1</td><td>2</td><td>3</td><td>4</td><td>5</td> <td></td><td></td><td></td><td></td><td></td><td>1</td><td>2</td> </tr> <tr> <td>6</td><td>7</td><td>8</td><td>9</td><td>10</td><td>11</td><td>12</td> <td>3</td><td>4</td><td>5</td><td>6</td><td>7</td><td>8</td><td>9</td> </tr> <tr> <td>13</td><td>14</td><td>15</td><td>16</td><td>17</td><td>18</td><td>19</td> <td>10</td><td>11</td><td>12</td><td>13</td><td>14</td><td>15</td><td>16</td> </tr> <tr> <td>20</td><td>21</td><td>22</td><td>23</td><td>24</td><td>25</td><td>26</td> <td>17</td><td>18</td><td>19</td><td>20</td><td>21</td><td>22</td><td>23</td> </tr> <tr> <td>27</td><td>28</td><td>29</td><td>30</td><td>31</td><td></td><td></td> <td>24</td><td>25</td><td>26</td><td>27</td><td>28</td><td>29</td><td>30</td> </tr> <tr> <td></td><td></td><td></td><td></td><td></td><td></td><td></td> <td>31</td><td></td><td></td><td></td><td></td><td></td><td></td> </tr> </tbody> </table>		JANUARY 2019							MARCH 2019							S	M	T	W	T	F	S	S	M	T	W	T	F	S			1	2	3	4	5						1	2	6	7	8	9	10	11	12	3	4	5	6	7	8	9	13	14	15	16	17	18	19	10	11	12	13	14	15	16	20	21	22	23	24	25	26	17	18	19	20	21	22	23	27	28	29	30	31			24	25	26	27	28	29	30								31						
JANUARY 2019							MARCH 2019																																																																																																															
S	M	T	W	T	F	S	S	M	T	W	T	F	S																																																																																																									
		1	2	3	4	5						1	2																																																																																																									
6	7	8	9	10	11	12	3	4	5	6	7	8	9																																																																																																									
13	14	15	16	17	18	19	10	11	12	13	14	15	16																																																																																																									
20	21	22	23	24	25	26	17	18	19	20	21	22	23																																																																																																									
27	28	29	30	31			24	25	26	27	28	29	30																																																																																																									
							31																																																																																																															
	ROLLERSKATING																																																																																																																					
	1	2	3	4																																																																																																																		

DAYTON ELEMENTARY SCHOOL

12000 S. DIAMOND LAKE RD. • DAYTON, MN 55327

HEALTH SERVICE



Our health service is staffed by a Health Paraprofessional who will care for your children if they become ill or injured while at school. We also have a Licensed School Nurse available for consultation. A parent/guardian will be contacted if necessary for the following reasons:

- An illness with a fever, rash or other reasons requiring the child to be sent home.
- An injury we think you should know about.
- A medical emergency.

If the parent/guardian cannot be reached and your child has a medical emergency, 911 will be called and your child will be transported to the nearest hospital. It is essential that the school has a current emergency phone number on the child's emergency form at school. Please communicate to the Health Paraprofessional any important health information at 763-506-2204.

- Immunizations (required by state law within 30 days)
- Communicable diseases
- Serious injury or illness
- Existing or new health conditions

Medication Policy:

The parent/guardian is encouraged to give medications at home whenever possible.

If your child requires medication to be given at school, you will need to:

- Sign parental permission form.
- Medication must be brought to school in original container.
- Doctor permission required for any medications given more than 15 days.
- Medications are not available for after school activities.



ABSENCE LINE: 763-506-2206

MAIN OFFICE: 763-506-2200



D A Y T O N E L E M E N T A R Y S C H O O L

MARCH 2019

		SUNDAY	MONDAY	TUESDAY	WEDNESDAY	THURSDAY	FRIDAY	SATURDAY																																																																																																		
<table border="1"> <thead> <tr> <th colspan="7">FEBRUARY 2019</th> <th colspan="7">APRIL 2019</th> </tr> <tr> <th>S</th><th>M</th><th>T</th><th>W</th><th>T</th><th>F</th><th>S</th> <th>S</th><th>M</th><th>T</th><th>W</th><th>T</th><th>F</th><th>S</th> </tr> </thead> <tbody> <tr> <td></td><td></td><td></td><td></td><td></td><td>1</td><td>2</td> <td></td><td>1</td><td>2</td><td>3</td><td>4</td><td>5</td><td>6</td> </tr> <tr> <td>3</td><td>4</td><td>5</td><td>6</td><td>7</td><td>8</td><td>9</td> <td>7</td><td>8</td><td>9</td><td>10</td><td>11</td><td>12</td><td>13</td> </tr> <tr> <td>10</td><td>11</td><td>12</td><td>13</td><td>14</td><td>15</td><td>16</td> <td>14</td><td>15</td><td>16</td><td>17</td><td>18</td><td>19</td><td>20</td> </tr> <tr> <td>17</td><td>18</td><td>19</td><td>20</td><td>21</td><td>22</td><td>23</td> <td>21</td><td>22</td><td>23</td><td>24</td><td>25</td><td>26</td><td>27</td> </tr> <tr> <td>24</td><td>25</td><td>26</td><td>27</td><td>28</td><td></td><td></td> <td>28</td><td>29</td><td>30</td><td></td><td></td><td></td><td></td> </tr> </tbody> </table>		FEBRUARY 2019							APRIL 2019							S	M	T	W	T	F	S	S	M	T	W	T	F	S						1	2		1	2	3	4	5	6	3	4	5	6	7	8	9	7	8	9	10	11	12	13	10	11	12	13	14	15	16	14	15	16	17	18	19	20	17	18	19	20	21	22	23	21	22	23	24	25	26	27	24	25	26	27	28			28	29	30										1 Dr. Seuss Read and Eat 8:40-8:15 a.m.	2
FEBRUARY 2019							APRIL 2019																																																																																																			
S	M	T	W	T	F	S	S	M	T	W	T	F	S																																																																																													
					1	2		1	2	3	4	5	6																																																																																													
3	4	5	6	7	8	9	7	8	9	10	11	12	13																																																																																													
10	11	12	13	14	15	16	14	15	16	17	18	19	20																																																																																													
17	18	19	20	21	22	23	21	22	23	24	25	26	27																																																																																													
24	25	26	27	28			28	29	30																																																																																																	
		3	4	5	6 <i>End of Trimester 2</i>	7	8	9																																																																																																		
		ROLLERSKATING			NO SCHOOL Staff Planning		NO SCHOOL Staff Planning																																																																																																			
			1	2	3																																																																																																					
10		11 NO SCHOOL	12 NO SCHOOL	13 NO SCHOOL	14 DISTRICT CLOSED	15 DISTRICT CLOSED	16																																																																																																			
		SPRING BREAK																																																																																																								
17		18	19 PTO Meeting 6:00 p.m.	20	21	22	23																																																																																																			
		4	5	1	2	3																																																																																																				
24		25	26	27	28	29	30																																																																																																			
31		4	5	1	2	3																																																																																																				

DAYTON ELEMENTARY SCHOOL

12000 S. DIAMOND LAKE RD. • DAYTON, MN 55327

LOST AND FOUND – LABEL, LABEL, LABEL!!

Articles such as clothing, lunch boxes, boots etc. will be placed in the lost and found, which is located in a bin by the recess door. Small items, such as jewelry, wallets, etc. will be held in the school office. Please **LABEL** articles of clothing with a permanent marker. Lost and found items are displayed at conference time or other school events for parents to look through. Please encourage your children to check the lost and found frequently for their missing items.

PARENT VOLUNTEERS

The Dayton Volunteer Services Coordinator coordinates the volunteer hours of all the Dayton parents, grandparents, and other volunteers who wish to give of their time to help our students grow and learn. The benefits are measured via the extra attention each student receives daily. It is simply priceless! Want to volunteer? Call 763-506-2230.

PETS

Animals are not allowed on school property during the school day or at any school events.

PARKING AT DAYTON ELEMENTARY

If you are attending an event at Dayton, you may park in the parking lot to the East of the building or the Central Park Lot (1st gravel driveway just west of the school). **Please be aware that the row of bus parking immediately in front of the school in the front parking lot is a fire lane and cannot be used at any time.** Parking is also not allowed on South Diamond Lake Road.



PTO

Dayton Elementary School • Parent & Teacher Organization
“Education- It’s a family affair!”

Parents are important partners with school staff to provide a quality education for our students. The PTO plans and provides for a variety of school events, student programs, materials, and equipment in support of Dayton’s education goals. Dayton’s PTO coordinates the fundraising activities that provide for extra opportunities for students and families in support of education. Family Fun night, Santa Dessert Night, Read and Eat Breakfast, and the Fall Picnic have all been planned and supported by PTO. Lyceums, scholarships, and classroom materials have greatly enhanced student experiences at Dayton with our PTO funded support.

PTO meets once a month at 6:00 p.m. in the Dayton Media Center. All parents are automatic members and are invited to attend board and planning meetings. Childcare is provided for many PTO meetings.

2018-2019 MEETING SCHEDULE

September 18, 2018

October 9, 2018

November 13, 2018

January 8, 2019

February 12, 2019

March 19, 2019

April 16, 2019

May 21, 2019



ABSENCE LINE: 763-506-2206

MAIN OFFICE: 763-506-2200



D A Y T O N E L E M E N T A R Y S C H O O L

APRIL 2019

SUNDAY	MONDAY	TUESDAY	WEDNESDAY	THURSDAY	FRIDAY	SATURDAY																																																																																																																
	1	2	3 Kindergarten Registration 8:00-10:00 a.m. 4:00-5:30 p.m.	4	5	6																																																																																																																
7	8	9	10	11	12	13																																																																																																																
14	15	16 PTO Meeting 6:00 p.m.	17	18	19 NO SCHOOL Staff Development	20																																																																																																																
21 <i>Easter</i>	22	23	24	25 Future Kindergarten Night 6:00-7:15 p.m.	26	27																																																																																																																
28	29	30			<table border="1"> <thead> <tr> <th colspan="7">MARCH 2019</th> <th colspan="7">MAY 2019</th> </tr> <tr> <th>S</th><th>M</th><th>T</th><th>W</th><th>T</th><th>F</th><th>S</th> <th>S</th><th>M</th><th>T</th><th>W</th><th>T</th><th>F</th><th>S</th> </tr> </thead> <tbody> <tr> <td></td><td></td><td></td><td></td><td></td><td>1</td><td>2</td> <td></td><td></td><td></td><td>1</td><td>2</td><td>3</td><td>4</td> </tr> <tr> <td>3</td><td>4</td><td>5</td><td>6</td><td>7</td><td>8</td><td>9</td> <td>5</td><td>6</td><td>7</td><td>8</td><td>9</td><td>10</td><td>11</td> </tr> <tr> <td>10</td><td>11</td><td>12</td><td>13</td><td>14</td><td>15</td><td>16</td> <td>12</td><td>13</td><td>14</td><td>15</td><td>16</td><td>17</td><td>18</td> </tr> <tr> <td>17</td><td>18</td><td>19</td><td>20</td><td>21</td><td>22</td><td>23</td> <td>19</td><td>20</td><td>21</td><td>22</td><td>23</td><td>24</td><td>25</td> </tr> <tr> <td>24</td><td>25</td><td>26</td><td>27</td><td>28</td><td>29</td><td>30</td> <td>26</td><td>27</td><td>28</td><td>29</td><td>30</td><td>31</td><td></td> </tr> <tr> <td>31</td><td></td><td></td><td></td><td></td><td></td><td></td> <td></td><td></td><td></td><td></td><td></td><td></td><td></td> </tr> </tbody> </table>		MARCH 2019							MAY 2019							S	M	T	W	T	F	S	S	M	T	W	T	F	S						1	2				1	2	3	4	3	4	5	6	7	8	9	5	6	7	8	9	10	11	10	11	12	13	14	15	16	12	13	14	15	16	17	18	17	18	19	20	21	22	23	19	20	21	22	23	24	25	24	25	26	27	28	29	30	26	27	28	29	30	31		31													
MARCH 2019							MAY 2019																																																																																																															
S	M	T	W	T	F	S	S	M	T	W	T	F	S																																																																																																									
					1	2				1	2	3	4																																																																																																									
3	4	5	6	7	8	9	5	6	7	8	9	10	11																																																																																																									
10	11	12	13	14	15	16	12	13	14	15	16	17	18																																																																																																									
17	18	19	20	21	22	23	19	20	21	22	23	24	25																																																																																																									
24	25	26	27	28	29	30	26	27	28	29	30	31																																																																																																										
31																																																																																																																						

DAYTON ELEMENTARY SCHOOL

12000 S. DIAMOND LAKE RD. • DAYTON, MN 55327

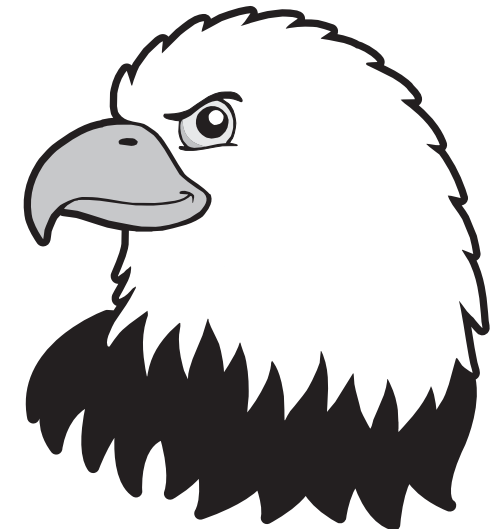
OUR PRINCIPLES AND CORE BELIEFS

We, the Dayton Elementary Staff, believe:

- It is the responsibility of all school staff to create a warm, welcoming, and positive learning environment.
- Relationships have a significant impact on learning.
- Adults should work to build and maintain positive and trusting relationships with students.
- Adults have the responsibility to learn and implement strategies that are proven to de-escalate and reduce student misbehavior.
- Adults are responsible to learn and use culturally competent strategies in the area of behavior management.
- Mutual respect among staff, students, and families are crucial for effective management and discipline systems.
- Students need an environment that provides motivation and promotes self-confidence, low-anxiety, and academic risk-taking. This is especially true for students who are fragile (struggling emotionally, behaviorally, or academically) or under-represented.
- Students should be treated in ways that preserve their dignity at all times.
- Teachers must regularly teach, model, practice, review & positively reinforce routines and expectations.

- Problems are really opportunities to learn and grow.
- Family involvement impacts a student's success.
- Families have the right to regular communication concerning their child's behavior choices both positive and negative.
- Students should have some control over their lives.
- Adults are here to help not judge.
- Students enter our educational system with a wide range of cultural, social and academic knowledge.
- It is important that the school community continually increases their ability to function comfortably in cross-cultural settings and to interact harmoniously with people from cultures and races that differ from their own.
- The best way for students to learn what behavior is considered inappropriate is when they face logical consequences for their choices (i.e. you forget your homework, you don't get credit/you break something, you figure out a way to fix it/you hurt someone, you make it up to them) instead of punishments.
- Delivery of the curriculum in a way that fosters achievement for all students has significant impact on student behavior.
- Adults should be reflective about classroom management practices and actions in order to decrease misbehavior in students.

- The behavior of all members of the school community must honor the school as a place of teaching and learning.
- Students have the right to a conversation with their teacher (or other adult) when their treatment seems unfair.
- Students construct meaning by connecting new information to existing knowledge, which varies from culture to culture.
- Students whose teachers spend time building community within the classroom show improved school appropriate behavior.



ABSENCE LINE: 763-506-2206

MAIN OFFICE: 763-506-2200



D A Y T O N E L E M E N T A R Y S C H O O L

MAY 2019

SUNDAY							MONDAY							TUESDAY							WEDNESDAY							THURSDAY							FRIDAY							SATURDAY						
APRIL 2019 S M T W T F S 1 2 3 4 5 6 7 8 9 10 11 12 13 14 15 16 17 18 19 20 21 22 23 24 25 26 27 28 29 30							JUNE 2019 S M T W T F S 1 2 3 4 5 6 7 8 9 10 11 12 13 14 15 16 17 18 19 20 21 22 23 24 25 26 27 28 29 30														1							2							3							4						
5							6							7							8							9							10							11						
							3							4							5							1							2							Family Fun Night 4:30-7:00 p.m.						
12							13							14							15							16							17							18						
							3							4							5							1							2							Dayton Olympics						
19							20							21							22							23							24							25						
							3							4							5							1							2							PTO Meeting 6:00 p.m.						
26							<i>Memorial Day</i> 27 NO SCHOOL							28							29							30							31													
														3							4							5							1													

DAYTON ELEMENTARY SCHOOL

12000 S. DIAMOND LAKE RD. • DAYTON, MN 55327

TOYS, CELL PHONES AND ELECTRONIC DEVICES

With very few exceptions, toys, cell phones and personal electronic devices are a distraction and are not to be used, seen or heard in the school setting. The school is not responsible for personal electronic items brought to school. Items that become a nuisance may be confiscated.



WELLNESS POLICY

In accordance with the district wellness policy and in order to promote healthy habits and wellness, Dayton will:

- Serve approved breakfast, lunch, and snack items from our kitchen that meet nutritional standards set by the state and district.
- Distribute only commercially prepared/packaged foods for classroom distribution and celebrations. Our Kitchen Supervisor (763-506-2211) can order healthy snacks for birthdays at the request of parents/guardians.
- Provide only non-carbonated beverages during the school day on school premises.
- Promote pre-packaged healthy snacks, including birthday treats.
- Remind students that they are not permitted to share or trade their own lunches or personal snacks determined to be acceptable by their parents/guardians.
- Promote non-food treats such as pencils, stickers, and books as birthday or celebration items to share with classmates. A number of students have food allergies or are not permitted sweet treats, but all students typically appreciate fun trinkets and school supplies. Birthday snacks may be saved for distribution in the lunchroom after a healthy lunch has been eaten or may be sent home in backpacks. Sweets, including cakes, cookies, and ice cream, will not be accepted for class distribution.
- Provide a snack time during the school day for students who bring parent approved/healthy snacks from home for personal consumption.

WINTER RECESS GUIDELINES

If the temperature is zero or below, and/or the wind chill is zero or below, outside recess will be held indoors. Proper dress for cold temperatures is necessary.



ABSENCE LINE: 763-506-2206

MAIN OFFICE: 763-506-2200



ANOKA-HENNEPIN
SCHOOLS
A future without limits

2018-19 CALENDAR

M	T	W	TH	F
2	3	4	5	6
9	10	11	12	13
16	17	18	19	20
23	24	25	26	27
30	31			

M	T	W	TH	F
	1	2	3	4
7	8	9	10	11
14	15	16	17	18
21	22	23	24	25
28	29	30	31	

AUGUST

M	T	W	TH	F
		1	2	3
6	7	8	9	10
13	14	15	16	17
20	21	22	23	24
27	28	29	30	31

M	T	W	TH	F
				1
4	5	6	7	8
11	12	13	14	15
18	19	20	21	22
25	26	27	28	

K THROUGH 12

2018-19 Calendar Key Dates - GRADES K-12

- Jul 4.....District closed, holiday
- Aug 21 - 23New teacher orientation
- Aug 27 - 30No students, workshops
- Sep 3.....District closed, holiday
- **Sep 4.....First Day of School**
- Oct 8.....No elem students
elem PLC/conf, K-5 para staff dev
- Oct 17No students, staff dev
- Oct 18 - 19No school, MEA
- Nov 21.....No school, teacher, paras, cooks
conf conversion day
- Nov 22District closed, holiday
- Nov 23District closed, designated holiday
- **Nov 29End of trimester one**
- Nov 30No students, staff planning, grades
- Dec 3.....No Students, PLC/staff dev
No CN assistants
- Dec 24.....District closed, designated holiday
- Dec 25.....District closed, holiday
- Dec 26-28, 31.....No school, winter break
- Jan 1.....District closed, holiday
- Jan 21.....No School, MLK Day
- Feb 18.....District closed, holiday
- Feb 19.....No students
elem PLC/conf, sec staff dev
- **Mar 6End of trimester two**
- Mar 7.....No students, staff planning, grades
- Mar 8.....No Students, PLC/staff dev
No paras or cooks
- Mar 11 - 13.....No School, Spring Break
- Mar 14 - 15.....District closed, designated holiday
- Apr 19No students, staff dev
- May 27District closed, holiday
- **Jun 5Elementary end of trimester three**
Pending School Board approval
- **Jun 5Elementary last day of school**
- **Jun 6.....End of trimester three**
- **Jun 6.....Last day of school**
- Jun 7No students, staff planning, grades

FEBRUARY

MARCH

M	T	W	TH	F
				1
4	5	6	7	8
11	12	13	14	15
18	19	20	21	22
25	26	27	28	29

APRIL

M	T	W	TH	F
1	2	3	4	5
8	9	10	11	12
15	16	17	18	19
22	23	24	25	26
29	30			

MAY

M	T	W	TH	F
		1	2	3
6	7	8	9	10
13	14	15	16	17
20	21	22	23	24
27	28	29	30	31

JUNE

M	T	W	TH	F
3	4	5	6	7
10	11	12	13	14
17	18	19	20	21
24	25	26	27	28

JULY

M	T	W	TH	F
2	3	4	5	6
9	10	11	12	13
16	17	18	19	20
23	24	25	26	27
30	31			

SEPTEMBER

M	T	W	TH	F
3	4	5	6	7
10	11	12	13	14
17	18	19	20	21
24	25	26	27	28

OCTOBER

M	T	W	TH	F
1	2	3	4	5
8	9	10	11	12
15	16	17	18	19
22	23	24	25	26
29	30	31		

NOVEMBER

M	T	W	TH	F
			1	2
5	6	7	8	9
12	13	14	15	16
19	20	21	22	23
26	27	28	29	30

DECEMBER

M	T	W	TH	F
3	4	5	6	7
10	11	12	13	14
17	18	19	20	21
24	25	26	27	28
31				

School Board approved May 22, 2017 (Subject to amendment) 3/28/18

ahschools.us